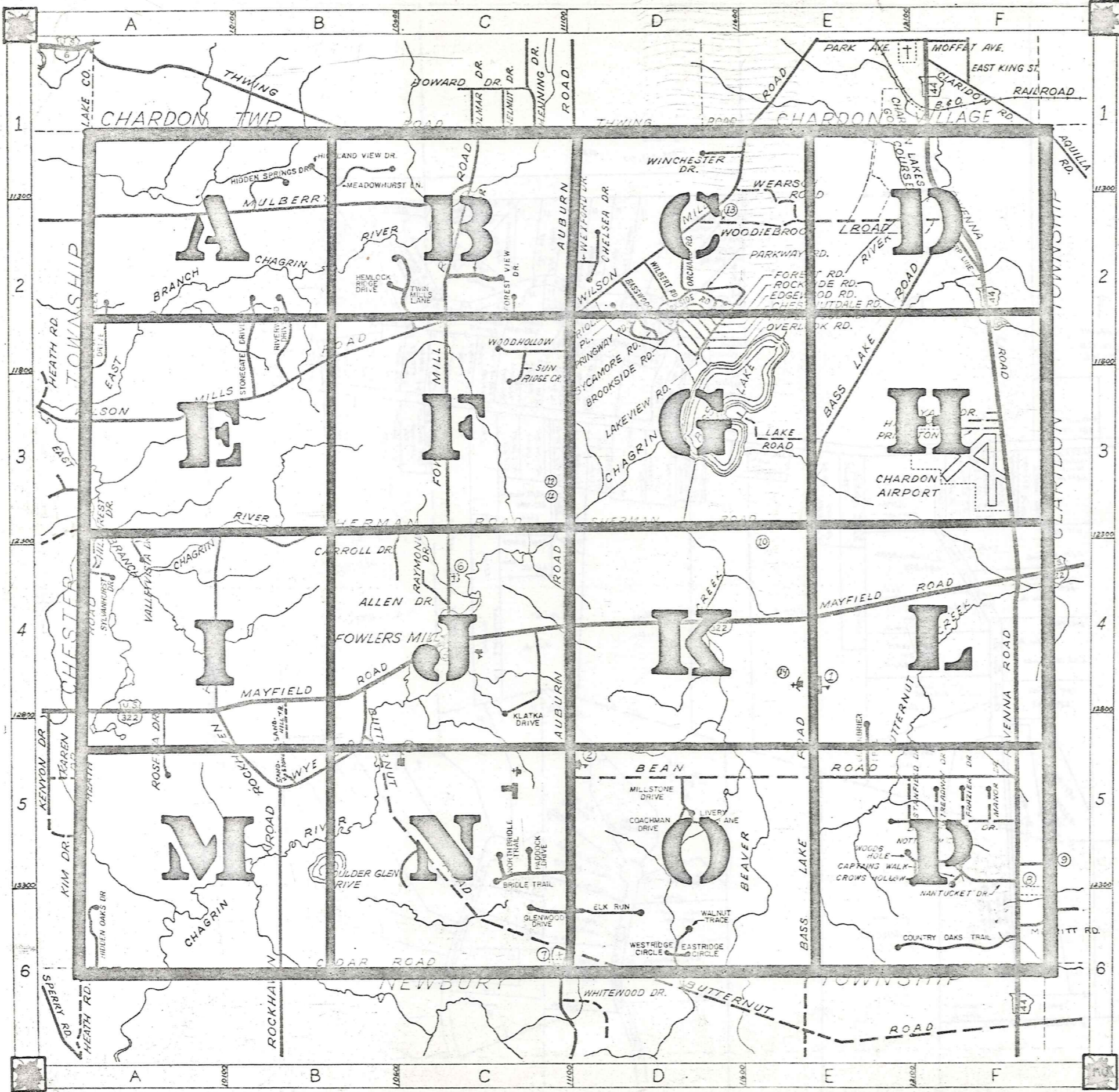


ROAD INDEX



A ALLEN DR. RUBURN RD.	C-4 DI-C6	H cont HIDDEN OAKS DR.	A-6 ROSETTA DR. RIVERWOOD DR.	A-5 B-3
B BASS LAKE RD. BASSWOOD RD. BEAN RD. BRADFORD DR. BROOKSIDE RD. BUTTERNUT RD. BOULDER GLEN DR. BRIDLE TRAIL	F2-E6 D-2 D5-F5 F-5 D-2 B4-D6 C5 C5	I J	S SHERMAN RD. SPRINGWAY RD. SYCAMORE RD. SYLVANHURST DR. STANFIELD DR. STONEGATE SUNRIDGE CR. SANDHILL TR. SANDSTONE DR.	A3-E3 D-2 D-2 A-4 E5 B3 C-2 B5
C CARROLL DR. CEDAR RD. CHESTNUTDALE RD. CHELSEA DR. CAPTAINS WALK CROWS HOLLOW COUNTRY OAKS TRAIL COACHMAN DRIVE	C-4 A6-C6 D-2 D-2 F5 F5 F6 D5	K KLATKA DR.	L LAKE RD. LAKEVIEW RD. LIVERY LANE LEGEND CREEK DR.	E-3 D-2 D5 A2
D EDGWOOD RD. ELK RUN EASTRIDGE CIRCLE	D-2 D-6 D-6	M MAPLEWOOD RD. MAYFIELD RD. MULBERRY RD. MANOR DR. MEADOWHURST LN. MILLSTONE DR. MERRITT DR.	T THWING RD. TREADWAY DR. TWIN MILLS LANE	B1-D1 F5 B2
E FOWLERS MILL RD. FRAZIER DR. FOREST RD. FOREST VIEW DR.	C1-C4 F5 D-2 C-2	N NOLLWOOD DRIVE NANTUCKET DR. NORTH BRIDLE TRAIL NOTTINGHAM CT.	U VALLEYVIEW DR.	A-4
F GLENWOOD DR. GREENBRIER DR.	C6 E5	O ORCHARD RD. OVERLOOK RD. ORIOLE PL.	V VALLEYVIEW DR.	A-4
G HARVARD DR. HEATH RD. HILLCREST DR. HIDDEN SPRINGS DR. HIGHLAND VIEW DR. HEMLOCK RIDGE DR.	F-3 A3-A5 A-4 B-1 B-1 B2	P PARKSIDE RD. PRINCETON DR. PARKWAY RD. PADDOCK DR.	W WEARSCH RD. WILBERT RD. WINCHESTER DR. WILSON MILLS RD. WOODIEBROOK RD. WYE RD. WEXFORD DR. WOOD HOLLOW DR. WOODS HOLE DR. WALNUT TRACE WESTRIDGE CIR.	E-2 D-2 D-1 A3-E1 D-2 B-3 D-1 C-2 F5 D6 D6
H MUNSON ELEM. SCHOOL SISTERS OF NOTRE DAME ED. CENTER SISTERS OF NOTRE DAME ED. CENTER WELFARE DEPT. FOWLERS MILLS COMM. CHRISTIAN CH. FOWLERS MILLS CEMETERY	F-3 A3-A5 A-4 B-1 B-1 B2	Q QUAKER RD. QUAKER DR.	Y YALE DR.	F-3
I MUNSON TWP. TOWN HALL MUNSON VOL. FIRE DEPT. ST. LUKE'S EPISCOPAL CHURCH PEACE LUTHERAN CH. ARCH.	C-4 C-4 A4-B6 D-2	R RAYMOND DR. RAVENNA RD. ROCKHAVEN RD. ROCKSIDE RD.		

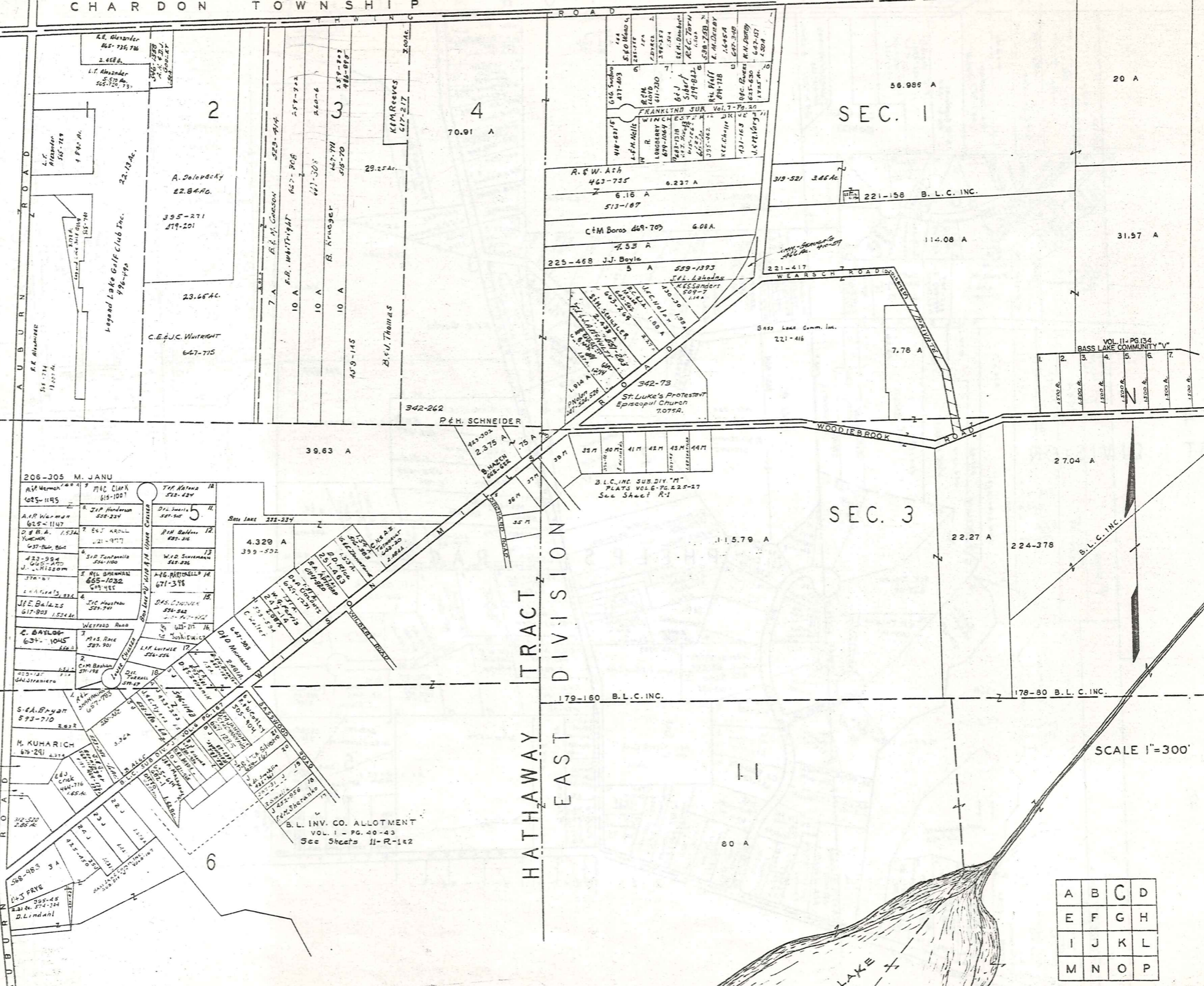
- ① MUNSON ELEM. SCHOOL
- ② SISTERS OF NOTRE DAME ED. CENTER
- ③ SISTERS OF NOTRE DAME ED. CENTER
- ④ WELFARE DEPT.
- ⑤ FOWLERS MILLS COMM. CHRISTIAN CH.
- ⑥ FOWLERS MILLS CEMETERY
- ⑦ MAPLE HILL CEMETERY
- ⑧ GEauga COUNTY SAFETY CENTER
- ⑨ GEauga CO. COMM. HOSPITAL
- ⑩ HEATH HILLING
- ⑪ MUNSON TWP. TOWN HALL
- ⑫ MUNSON VOL. FIRE DEPT.
- ⑬ ST. LUKE'S EPISCOPAL CHURCH
- ⑭ PEACE LUTHERAN CH. ARCH.

MUNSON TOWNSHIP

SCALE: 1" = 2000'
ROBERT E. PHILLIPS,
GEAUGA COUNTY ENGINEER

- UNPAVED ROAD
- PAVED ROAD
- ++++ RAILROAD
- TOWNSHIP LINE
- COUNTY LINE
- CORPORATION LINE

CHARDON TOWNSHIP



SEC. 1

SEC. 3

HATHAWAY EAST TRACT DIVISION

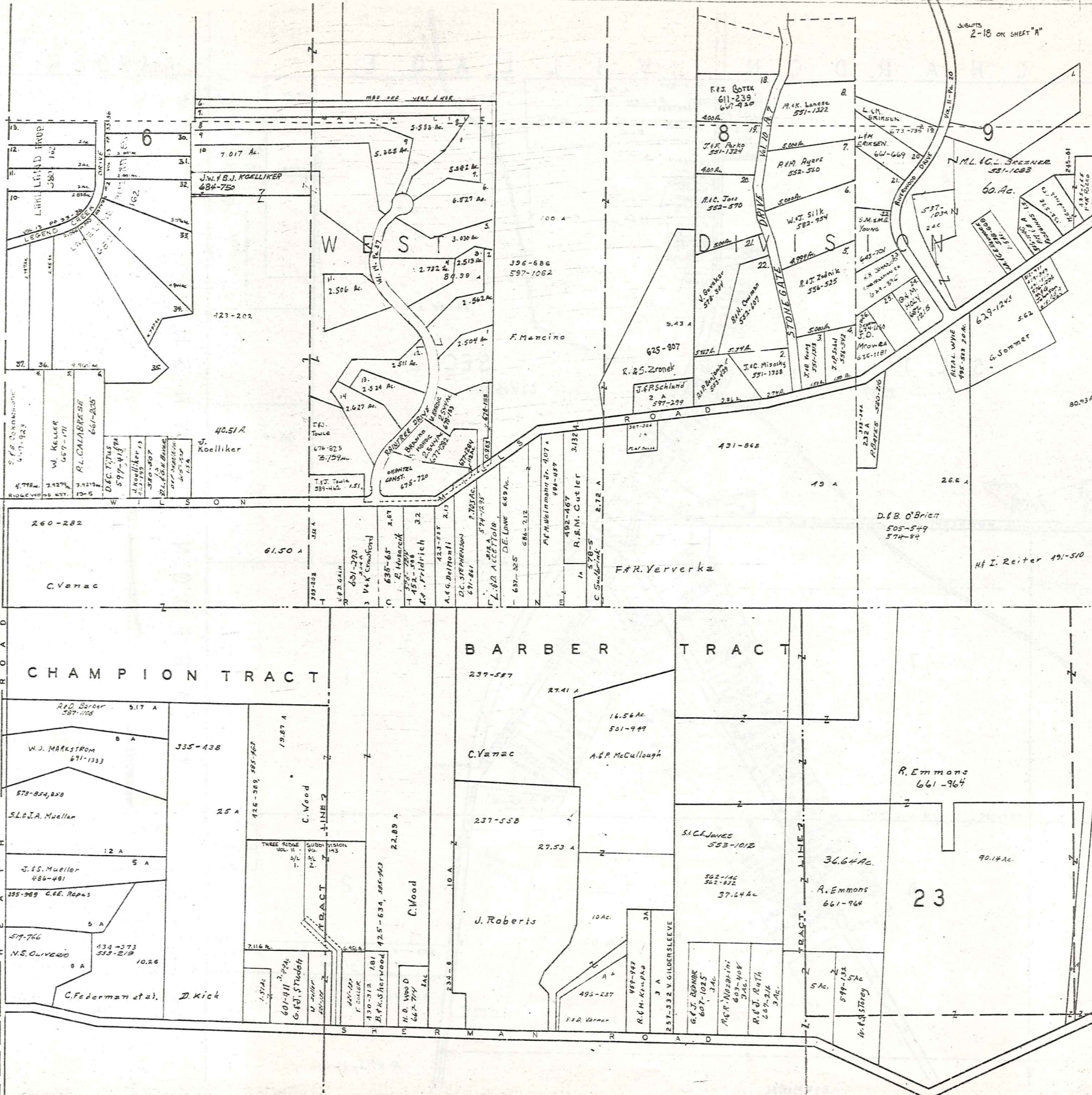
SCALE 1"=300'

A	B	C	D
E	F	G	H
I	J	K	L
M	N	O	P

MUNSON TWP. JAN 1982

T O W N S H I P

C H E S T E R



12

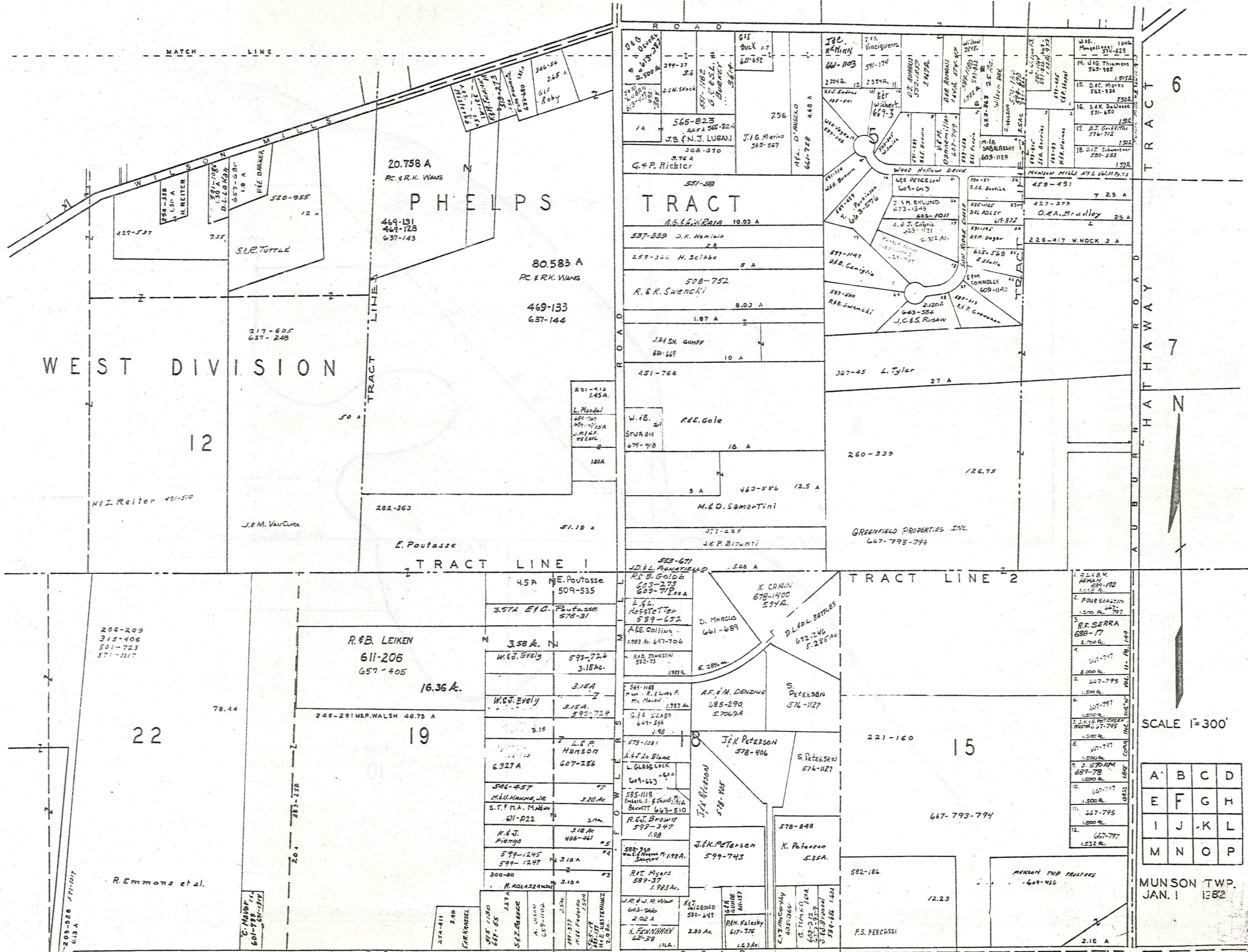


TRACT TWO

SCALE 1"=300'

A	B	C	D
E	F	G	H
I	J	K	L
M	N	O	P

MUNSON TWP. JAN. 1, 1982



WEST DIVISION

PHELPS

TRACT

TRACT 6

TRACT 7

12

15

19

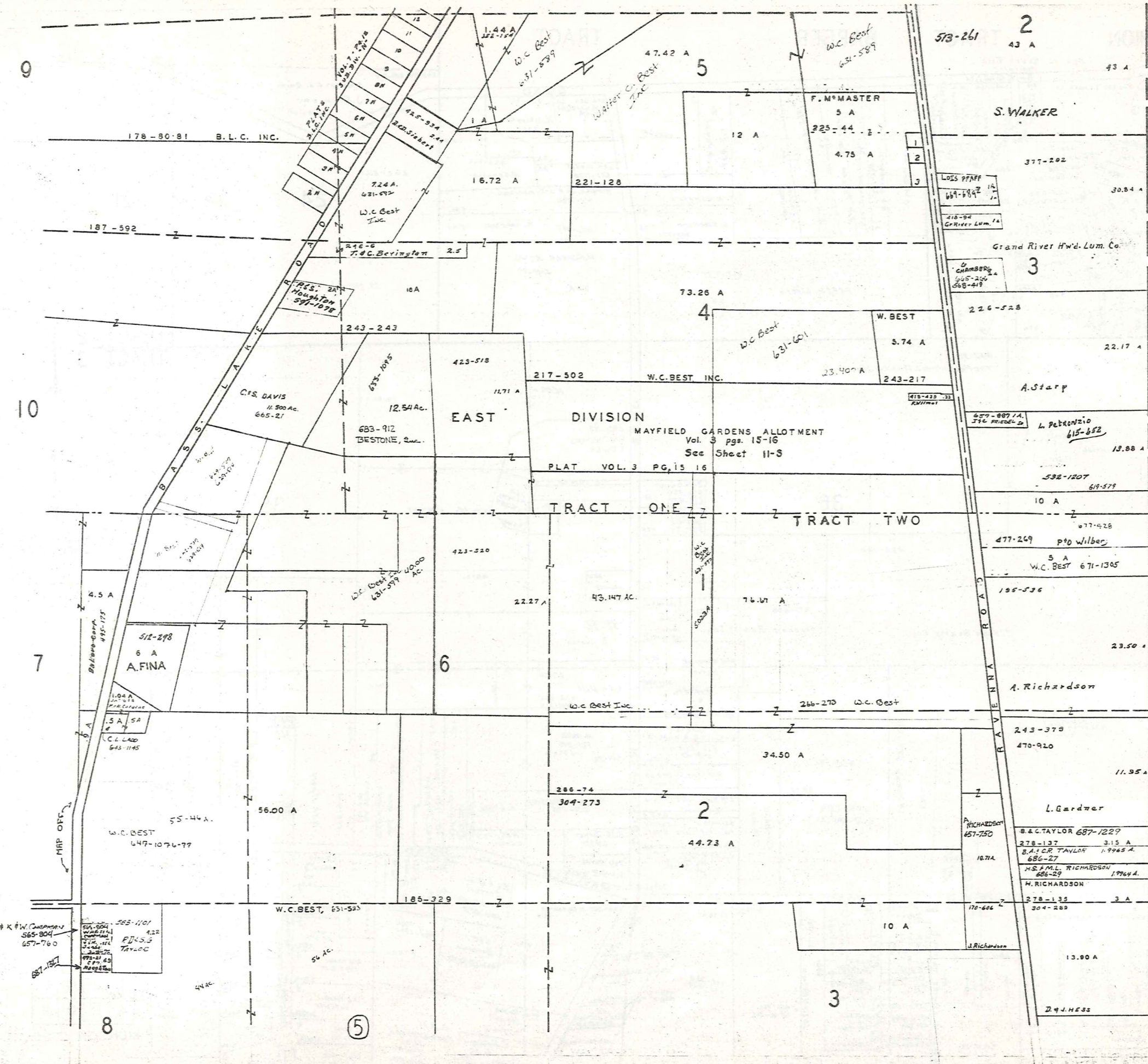
22

23

SCALE 1"=300'

A	B	C	D
E	F	G	H
I	J	K	L
M	N	O	P

MUNSON TWP. JAN. 1 1882



1. B.F. McMASTER 492-446
 2. P.C. CHAPMAN 562-386
 3. R.A. CHAPMAN 684-1253

CLARIDON TOWNSHIP

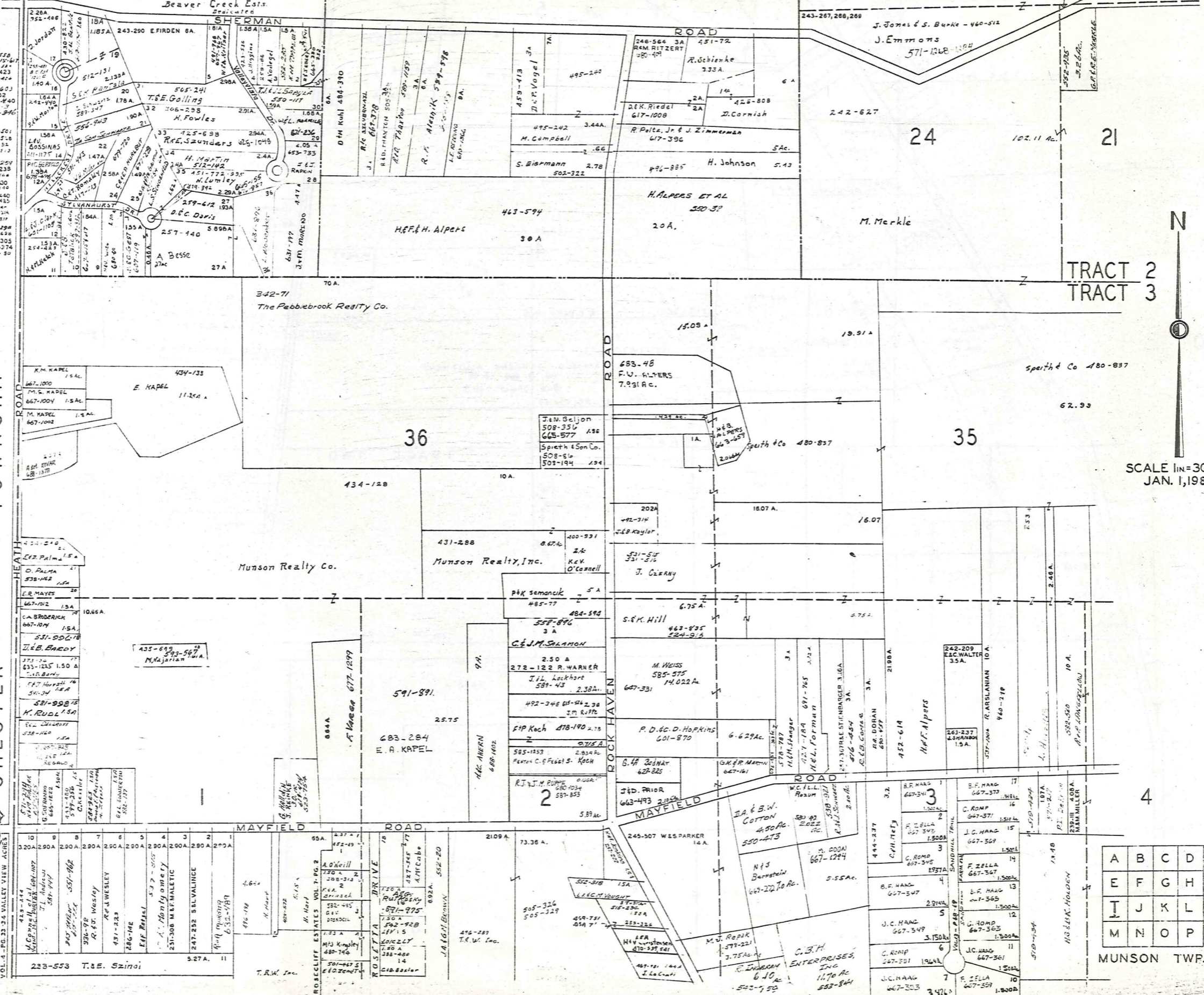
SCALE 1"=300'

A	B	C	D
E	F	G	H
I	J	K	L
M	N	O	P

MUNSON TWP.
 JAN 1, 1982

CHAMPION TRACT BARBER TRACT

Beaver Creek Ests. Indicate



SCALE 1"=300 FT. JAN. 1, 1982

TRACT 2
TRACT 3

4

A	B	C	D
E	F	G	H
I	J	K	L
M	N	O	P

MUNSON TWP.

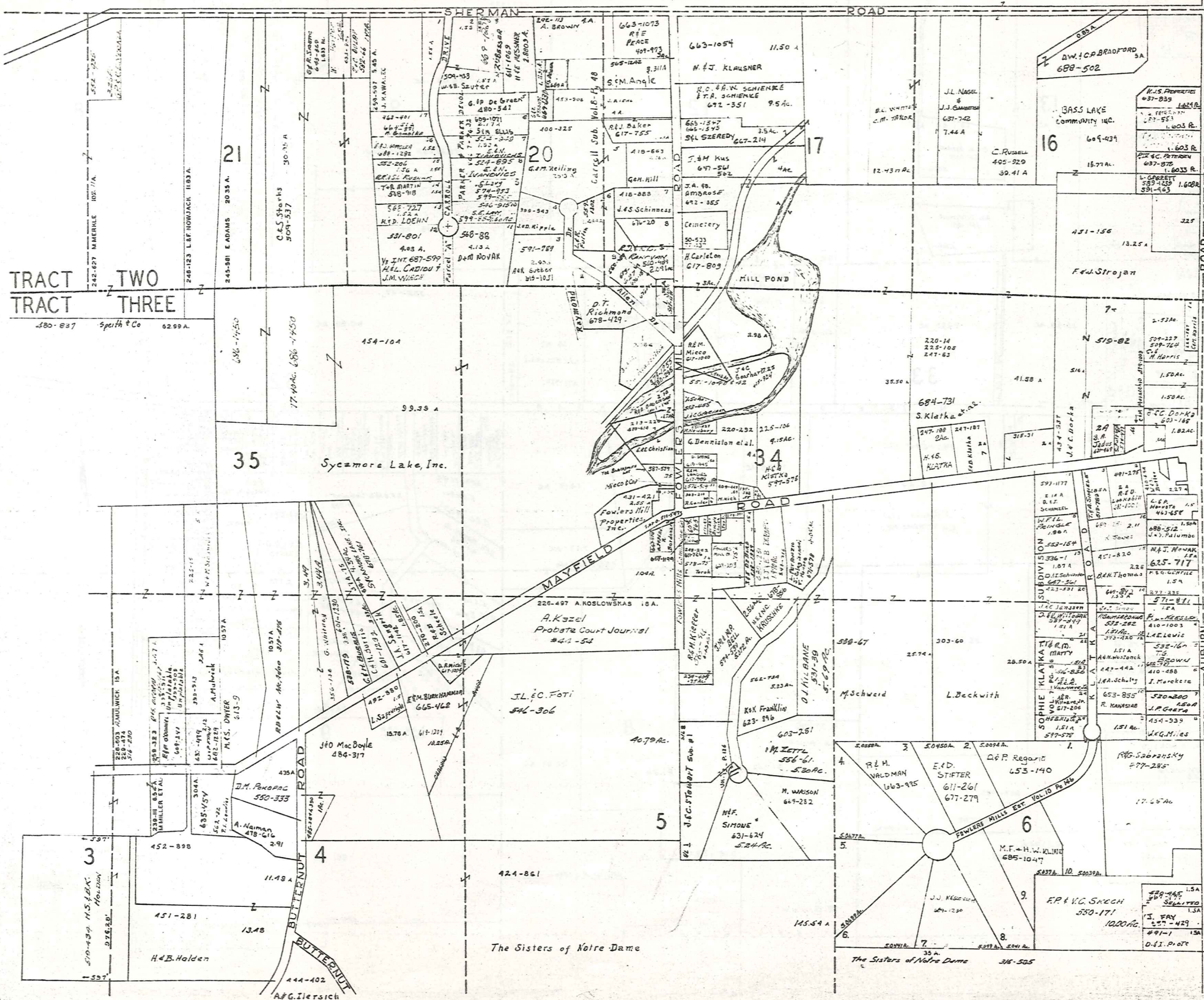
CHESTER TOWNSHIP



322

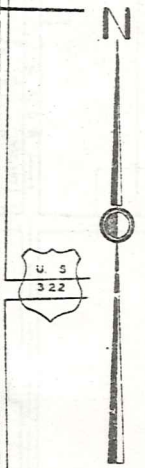
- 7 D. Temple 243-42
- 8 C. G. Stacey 607-558
- 9 L. A. Smith 112-187
- 10 L. A. Smith 112-187
- 11 H. Hatch 256-423
- 12 J. Jordan 332-414
- 13
- 14 V. Taylor 352-603
- 15 R. M. Davis 239-502
- 16 R. W. Morton 242-440
- 17 M. A. Sweet 546-346
- 18
- 19
- 20 L. Nelson 231-501
- 21 R. M. Kaye 361-516
- 22 S. T. Smith 137-32
- 23 T. W. Smith 417-113
- 24 L. R. Longstreet
- 25 L. W. Curran 331-259
- 26 H. A. Schenck 417-104
- 27 A. Dezza 257-330
- 28 A. Dezza 257-114
- 29 A. Dezza 257-140
- 30 R. E. Lighton 432-435
- 31 C. D. Paine 241-340
- 32 J. J. Voelgel 395-141
- 33 R. E. Clumey 341-117
- 34 H. Fowles 300-290
- 35 R. E. J. Walters 425-628
- 36 J. C. T. Sling 259-305
- 37 A. Dezza 257-174
- 38 R. E. Sanders 277-50

- 10 320A 290A 290A 290A 290A 290A 290A 290A
- 11 290A 290A 290A 290A 290A 290A 290A 290A
- 12 290A 290A 290A 290A 290A 290A 290A 290A
- 13 290A 290A 290A 290A 290A 290A 290A 290A
- 14 290A 290A 290A 290A 290A 290A 290A 290A
- 15 290A 290A 290A 290A 290A 290A 290A 290A
- 16 290A 290A 290A 290A 290A 290A 290A 290A
- 17 290A 290A 290A 290A 290A 290A 290A 290A
- 18 290A 290A 290A 290A 290A 290A 290A 290A
- 19 290A 290A 290A 290A 290A 290A 290A 290A
- 20 290A 290A 290A 290A 290A 290A 290A 290A
- 21 290A 290A 290A 290A 290A 290A 290A 290A
- 22 290A 290A 290A 290A 290A 290A 290A 290A
- 23 290A 290A 290A 290A 290A 290A 290A 290A
- 24 290A 290A 290A 290A 290A 290A 290A 290A
- 25 290A 290A 290A 290A 290A 290A 290A 290A
- 26 290A 290A 290A 290A 290A 290A 290A 290A
- 27 290A 290A 290A 290A 290A 290A 290A 290A
- 28 290A 290A 290A 290A 290A 290A 290A 290A
- 29 290A 290A 290A 290A 290A 290A 290A 290A
- 30 290A 290A 290A 290A 290A 290A 290A 290A
- 31 290A 290A 290A 290A 290A 290A 290A 290A
- 32 290A 290A 290A 290A 290A 290A 290A 290A
- 33 290A 290A 290A 290A 290A 290A 290A 290A
- 34 290A 290A 290A 290A 290A 290A 290A 290A
- 35 290A 290A 290A 290A 290A 290A 290A 290A
- 36 290A 290A 290A 290A 290A 290A 290A 290A
- 37 290A 290A 290A 290A 290A 290A 290A 290A
- 38 290A 290A 290A 290A 290A 290A 290A 290A
- 39 290A 290A 290A 290A 290A 290A 290A 290A
- 40 290A 290A 290A 290A 290A 290A 290A 290A
- 41 290A 290A 290A 290A 290A 290A 290A 290A
- 42 290A 290A 290A 290A 290A 290A 290A 290A
- 43 290A 290A 290A 290A 290A 290A 290A 290A
- 44 290A 290A 290A 290A 290A 290A 290A 290A
- 45 290A 290A 290A 290A 290A 290A 290A 290A
- 46 290A 290A 290A 290A 290A 290A 290A 290A
- 47 290A 290A 290A 290A 290A 290A 290A 290A
- 48 290A 290A 290A 290A 290A 290A 290A 290A
- 49 290A 290A 290A 290A 290A 290A 290A 290A
- 50 290A 290A 290A 290A 290A 290A 290A 290A
- 51 290A 290A 290A 290A 290A 290A 290A 290A
- 52 290A 290A 290A 290A 290A 290A 290A 290A
- 53 290A 290A 290A 290A 290A 290A 290A 290A
- 54 290A 290A 290A 290A 290A 290A 290A 290A
- 55 290A 290A 290A 290A 290A 290A 290A 290A
- 56 290A 290A 290A 290A 290A 290A 290A 290A
- 57 290A 290A 290A 290A 290A 290A 290A 290A
- 58 290A 290A 290A 290A 290A 290A 290A 290A
- 59 290A 290A 290A 290A 290A 290A 290A 290A
- 60 290A 290A 290A 290A 290A 290A 290A 290A
- 61 290A 290A 290A 290A 290A 290A 290A 290A
- 62 290A 290A 290A 290A 290A 290A 290A 290A
- 63 290A 290A 290A 290A 290A 290A 290A 290A
- 64 290A 290A 290A 290A 290A 290A 290A 290A
- 65 290A 290A 290A 290A 290A 290A 290A 290A
- 66 290A 290A 290A 290A 290A 290A 290A 290A
- 67 290A 290A 290A 290A 290A 290A 290A 290A
- 68 290A 290A 290A 290A 290A 290A 290A 290A
- 69 290A 290A 290A 290A 290A 290A 290A 290A
- 70 290A 290A 290A 290A 290A 290A 290A 290A
- 71 290A 290A 290A 290A 290A 290A 290A 290A
- 72 290A 290A 290A 290A 290A 290A 290A 290A
- 73 290A 290A 290A 290A 290A 290A 290A 290A
- 74 290A 290A 290A 290A 290A 290A 290A 290A
- 75 290A 290A 290A 290A 290A 290A 290A 290A
- 76 290A 290A 290A 290A 290A 290A 290A 290A
- 77 290A 290A 290A 290A 290A 290A 290A 290A
- 78 290A 290A 290A 290A 290A 290A 290A 290A
- 79 290A 290A 290A 290A 290A 290A 290A 290A
- 80 290A 290A 290A 290A 290A 290A 290A 290A
- 81 290A 290A 290A 290A 290A 290A 290A 290A
- 82 290A 290A 290A 290A 290A 290A 290A 290A
- 83 290A 290A 290A 290A 290A 290A 290A 290A
- 84 290A 290A 290A 290A 290A 290A 290A 290A
- 85 290A 290A 290A 290A 290A 290A 290A 290A
- 86 290A 290A 290A 290A 290A 290A 290A 290A
- 87 290A 290A 290A 290A 290A 290A 290A 290A
- 88 290A 290A 290A 290A 290A 290A 290A 290A
- 89 290A 290A 290A 290A 290A 290A 290A 290A
- 90 290A 290A 290A 290A 290A 290A 290A 290A
- 91 290A 290A 290A 290A 290A 290A 290A 290A
- 92 290A 290A 290A 290A 290A 290A 290A 290A
- 93 290A 290A 290A 290A 290A 290A 290A 290A
- 94 290A 290A 290A 290A 290A 290A 290A 290A
- 95 290A 290A 290A 290A 290A 290A 290A 290A
- 96 290A 290A 290A 290A 290A 290A 290A 290A
- 97 290A 290A 290A 290A 290A 290A 290A 290A
- 98 290A 290A 290A 290A 290A 290A 290A 290A
- 99 290A 290A 290A 290A 290A 290A 290A 290A
- 100 290A 290A 290A 290A 290A 290A 290A 290A



TRACT TWO
TRACT THREE

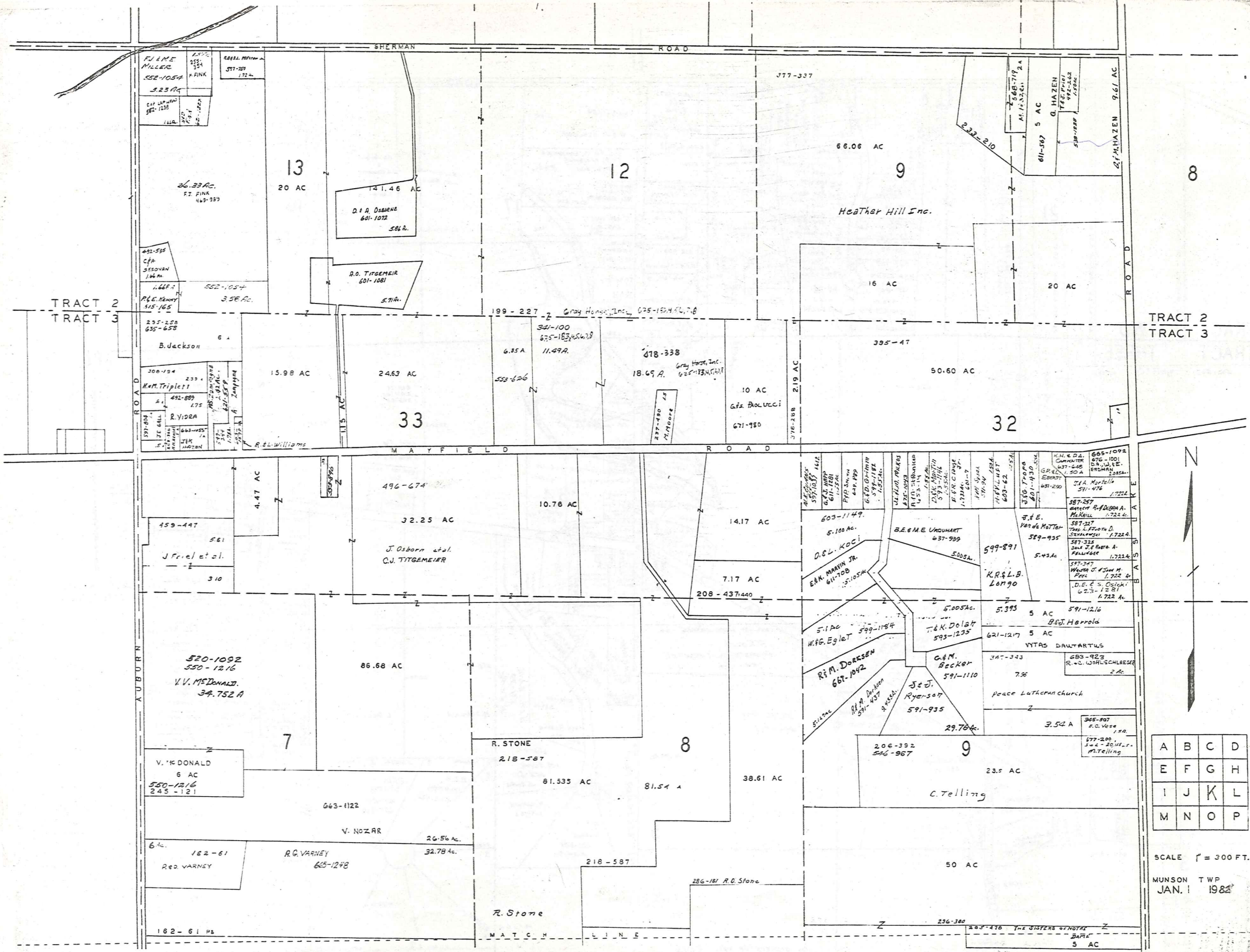
1) Fowler's Mill, 520-447 lot 34
2) Munson Fire Co. 255-585 lot 34



SCALE 1"=300'
JAN. 1, 1982

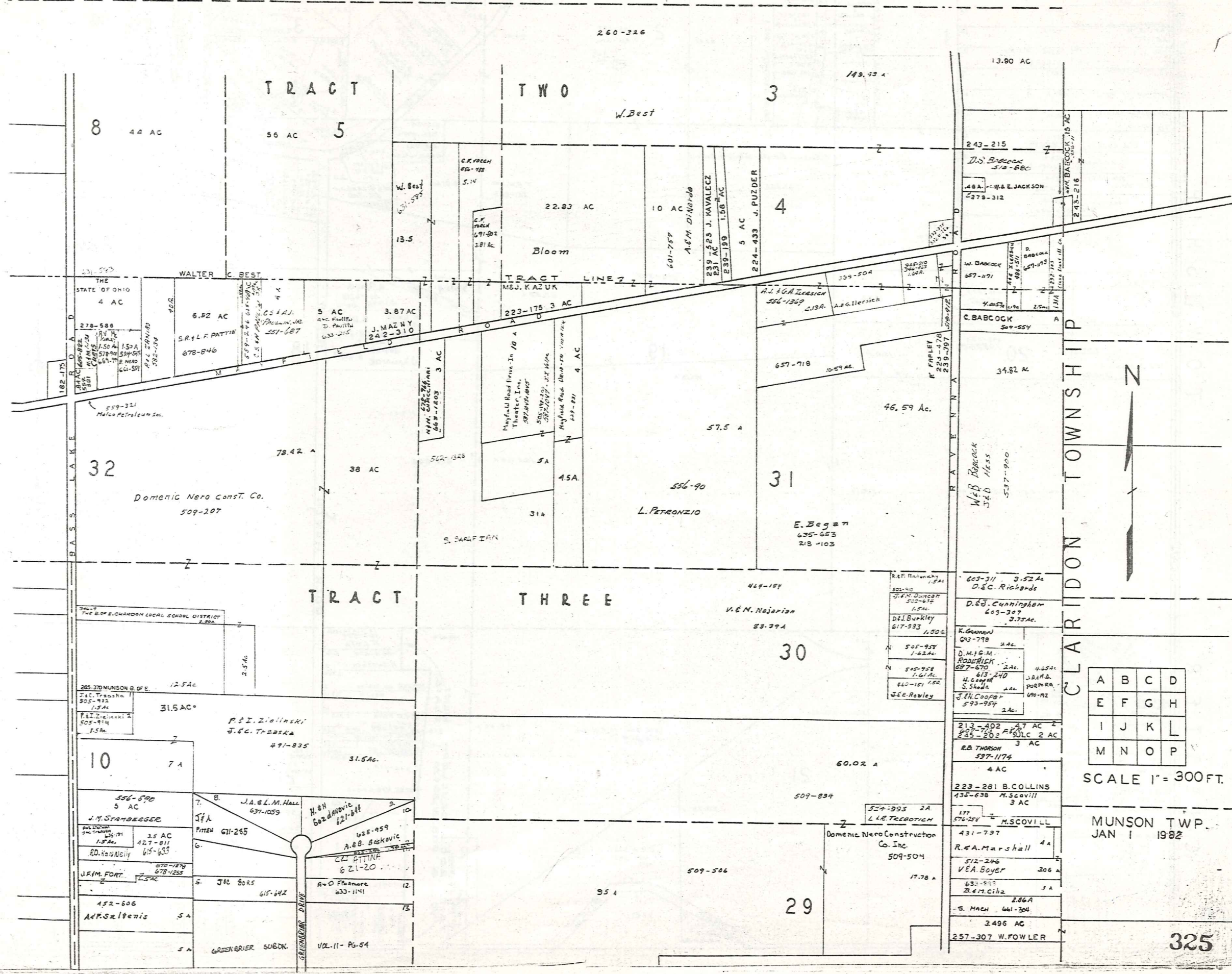
A	B	C	D
E	F	G	H
I	J	K	L
M	N	O	P

MUNSON TWP



A	B	C	D
E	F	G	H
I	J	K	L
M	N	O	P

SCALE 1" = 300 FT.
 MUNSON TWP
 JAN. 1 1982



CLARIDON TOWNSHIP



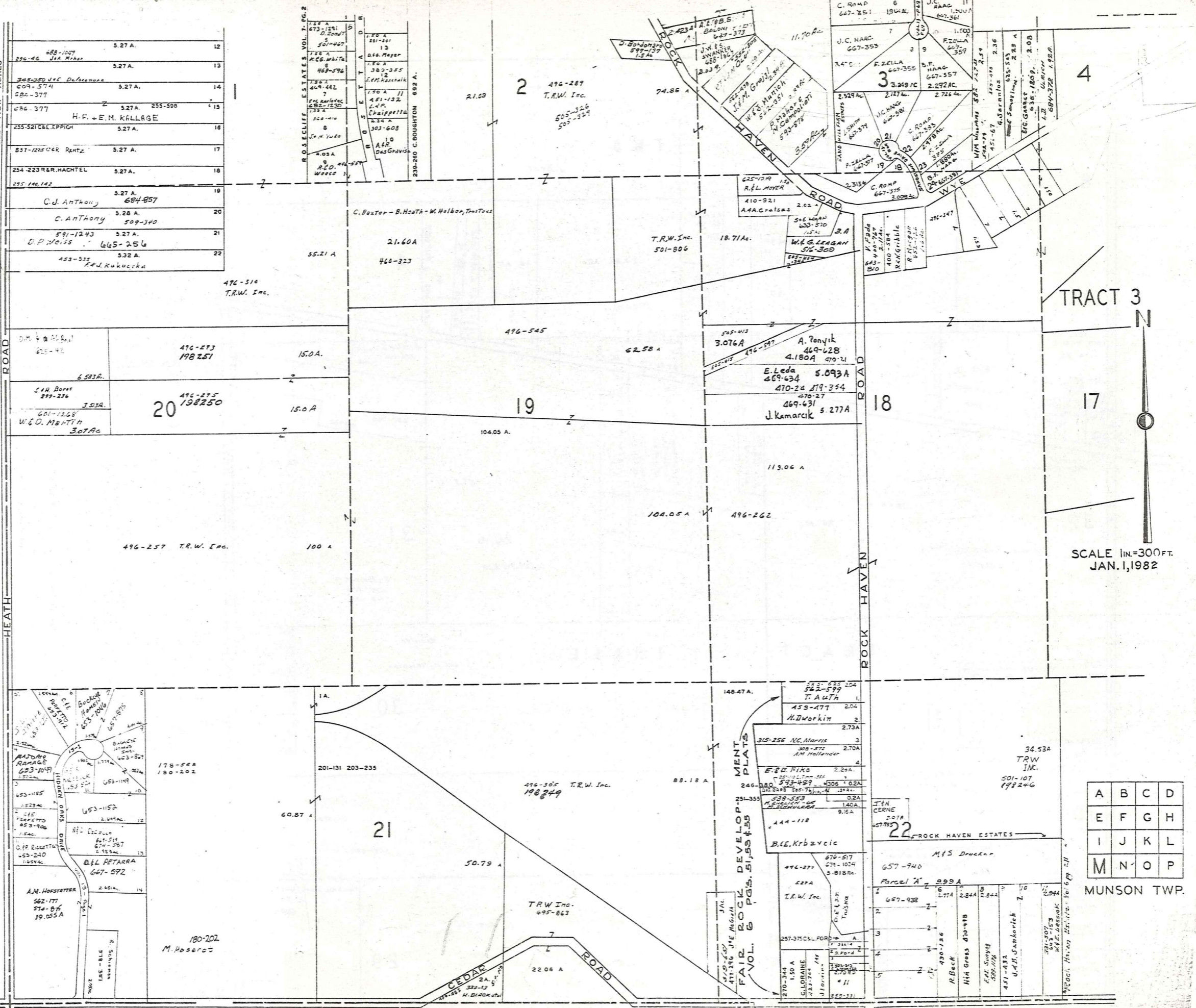
A	B	C	D
E	F	G	H
I	J	K	L
M	N	O	P

SCALE 1" = 300 FT.

MUNSON TWP.
JAN 1 1982

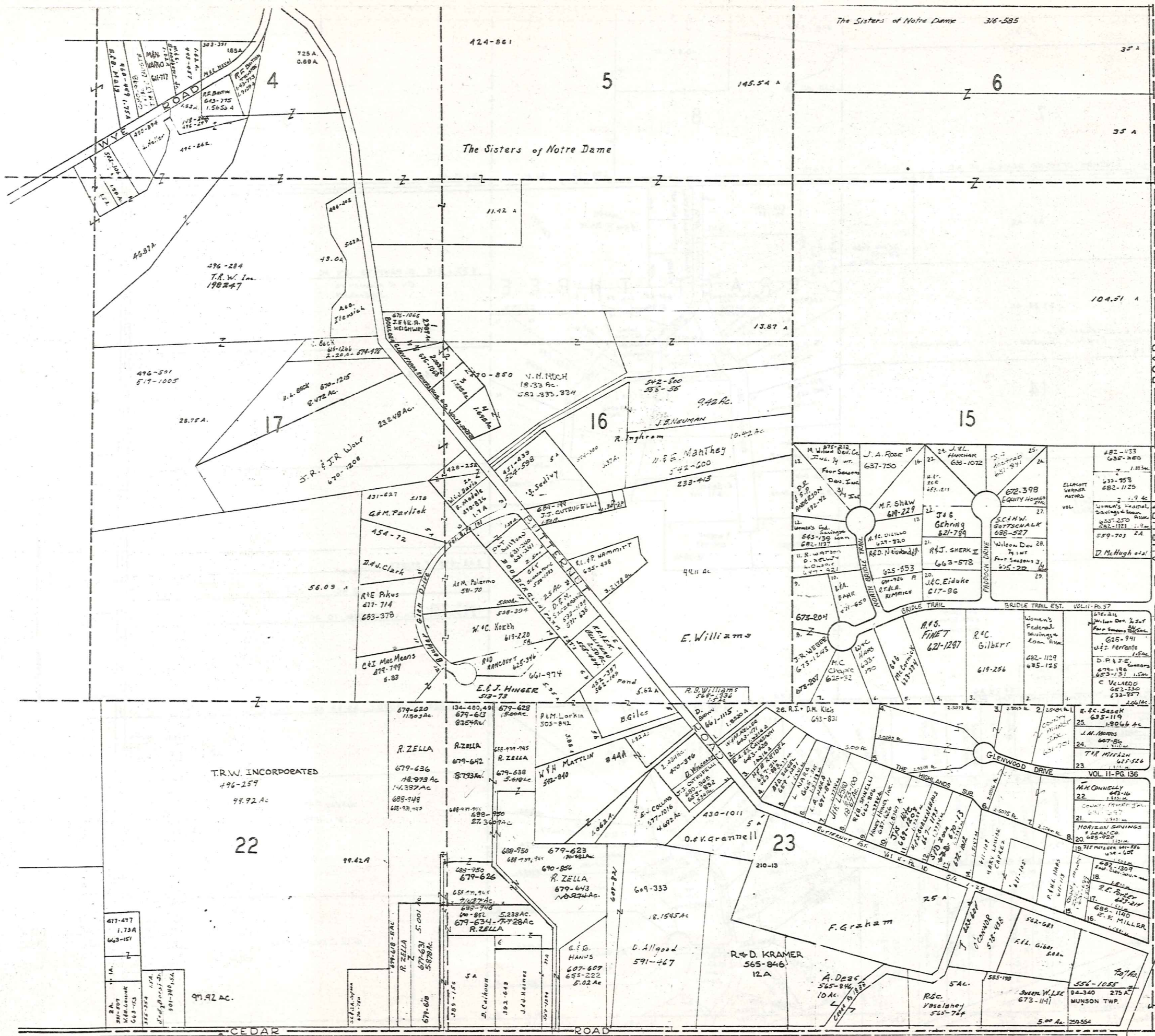
CHESTER TOWNSHIP

VALLEY VIEW ACRES VOL. 4 - PG. 33-34



A	B	C	D
E	F	G	H
I	J	K	L
M	N	O	P

MUNSON TWP.



BEAN ROAD
TRACT 3

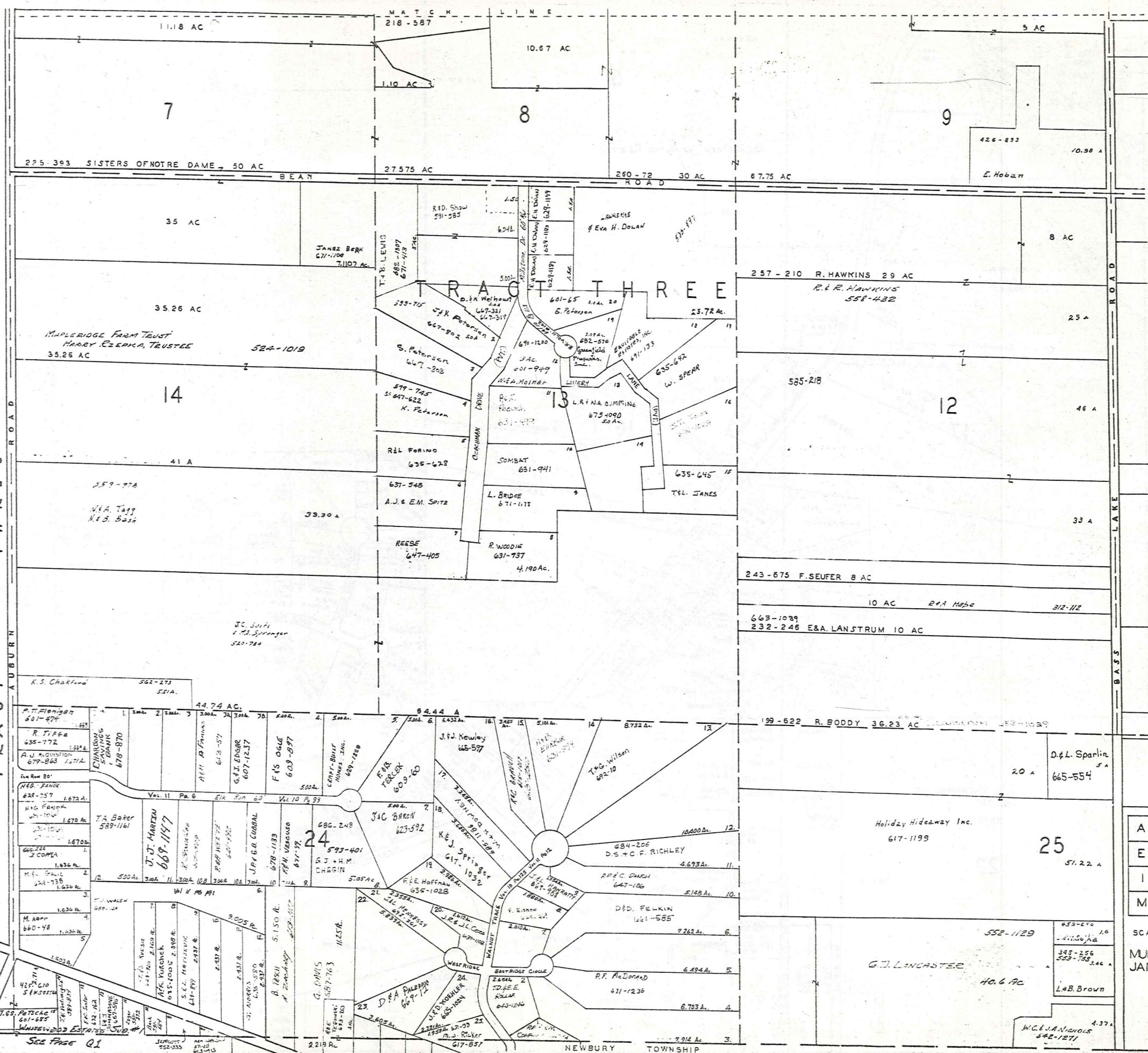


SCALE 1"=300 FT.
JAN. 1, 1962

A	B	C	D
E	F	G	H
I	J	K	L
M	N	O	P

MUNSON TWP.

TRACT THREE



A	B	C	D
E	F	G	H
I	J	K	L
M	N	O	P

SCALE 1"=300 FT
 MUNSON TWP.
 JAN. 1 1982

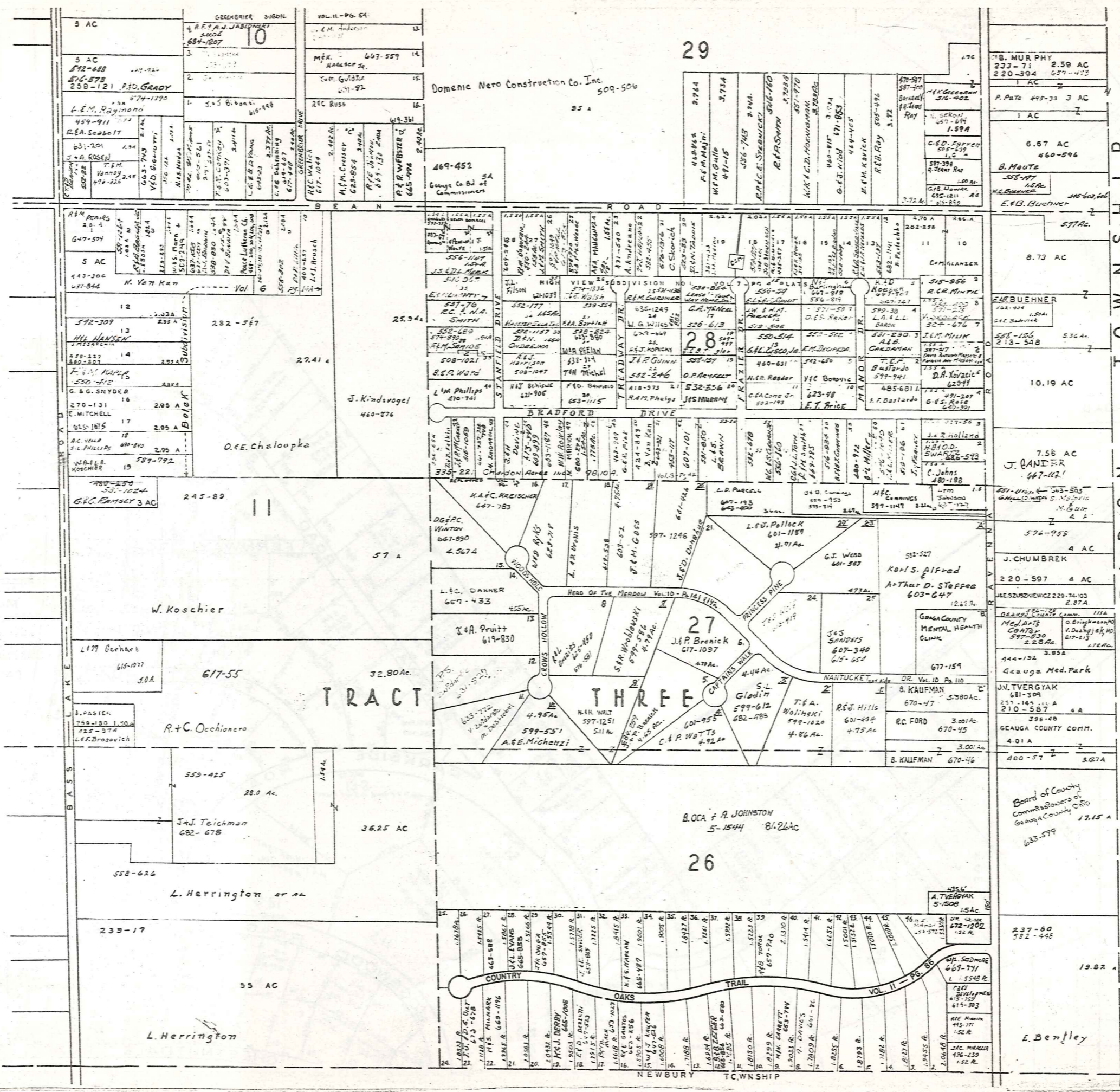
SEE PAGE Q1

9

29

12

25



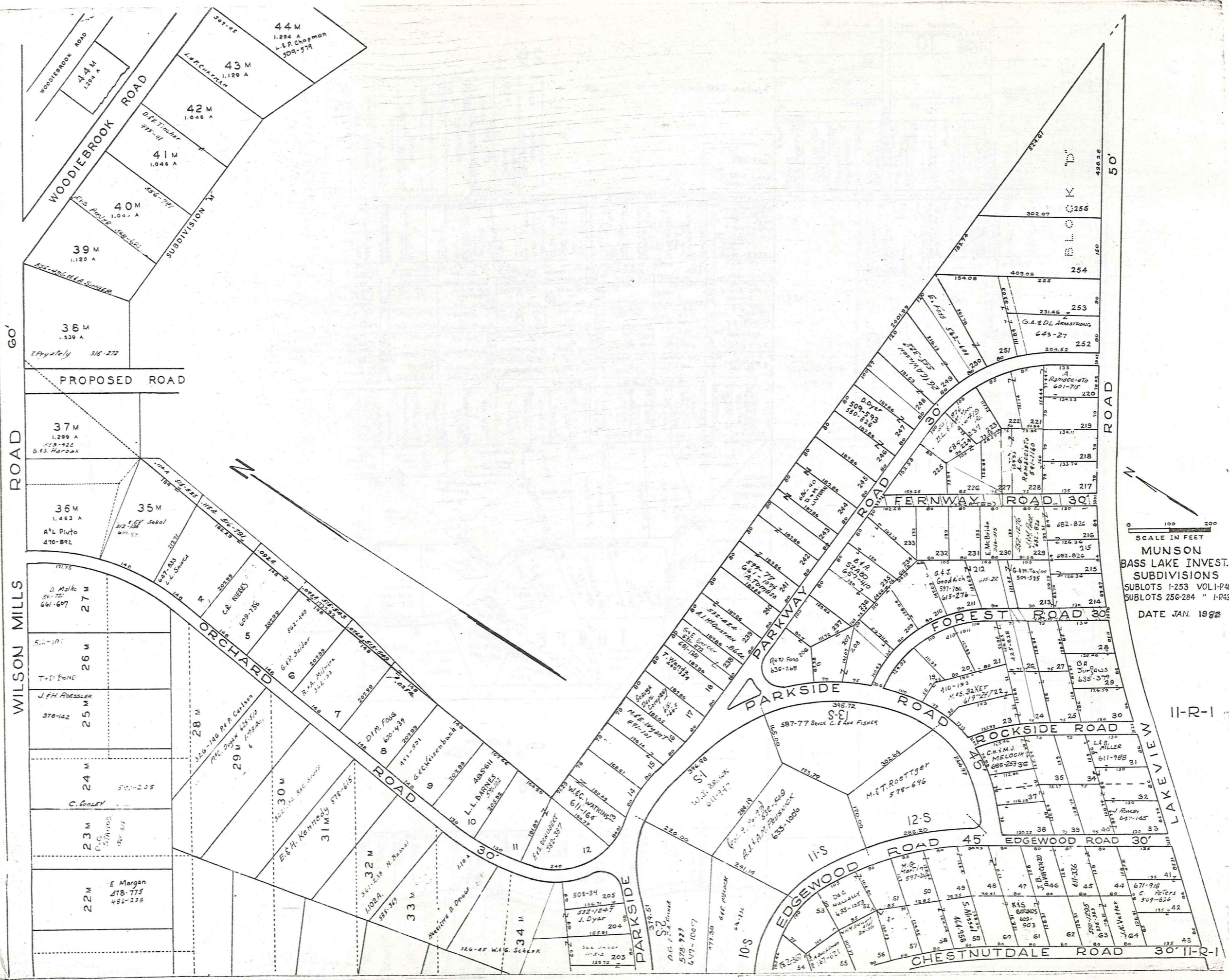
CLARIDON TOWNSHIP

A	B	C	D
E	F	G	H
I	J	K	L
M	N	O	P

SCALE 1"=300 FT.

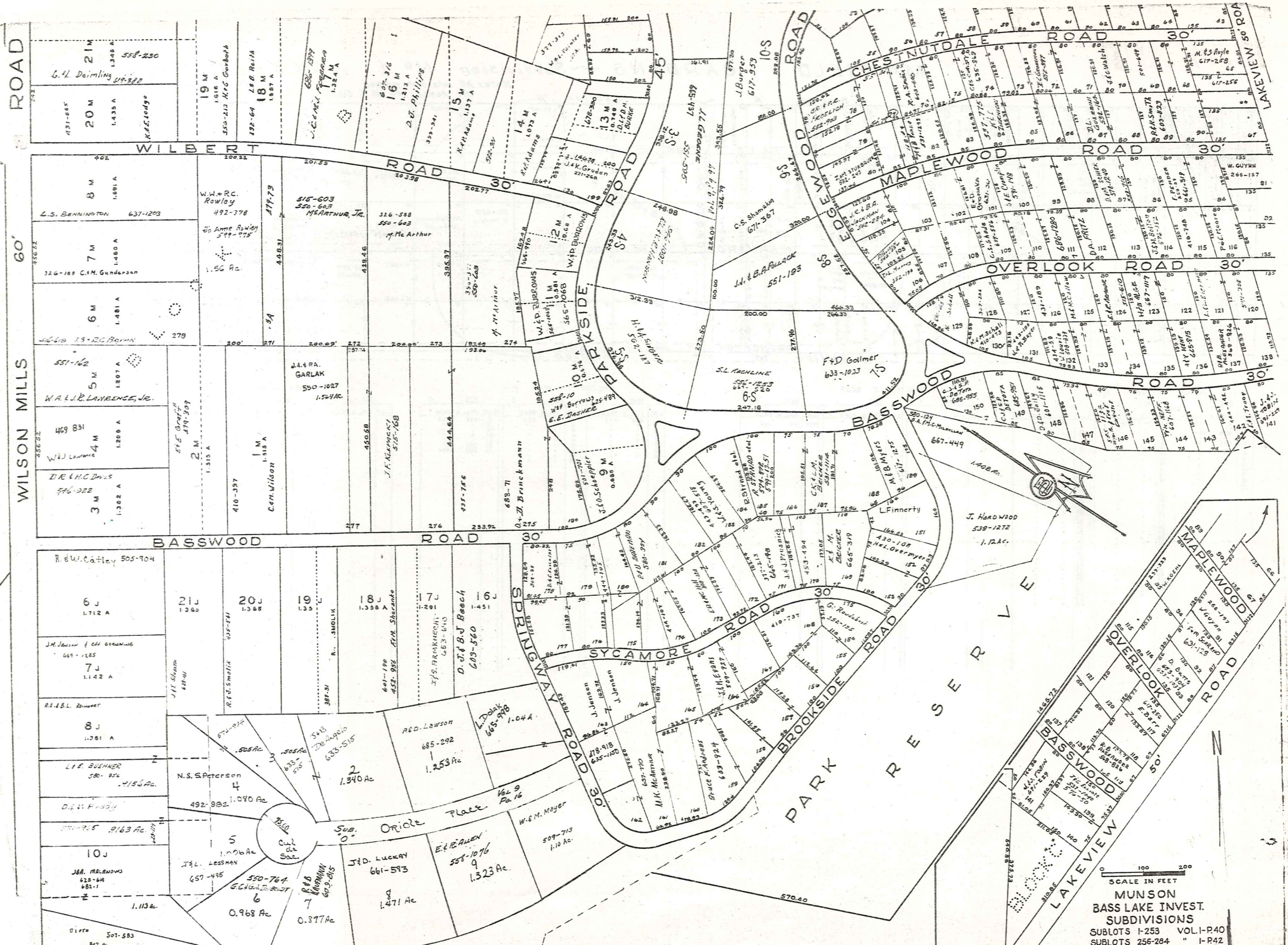
MUNSON TWP. JAN 1992

329



SCALE IN FEET
 0 100 200
MUNSON
 BASS LAKE INVEST.
 SUBDIVISIONS
 SUBLOTS 1-253 VOL-1-P40
 SUBLOTS 256-284 " 1-P42
 DATE JAN. 1982

11-R-1



ALL LOT NUMBERS FOLLOWED BY 'J' = BASS LAKE COMM. INC.
SUB. DIV. VOL. 6 - PG. 157

All Parcels Not Having Name
Thereon Stand In Name Of
Bass Lake Comm. Inc.

SCALE IN FEET
MUNSON
BASS LAKE INVEST.
SUBDIVISIONS
SUBLOTS 1-253 VOL. I-P40
SUBLOTS 256-284 " I-P42
SUBLOTS 158-162 " 2-P3
DATE JAN. 1982

Explanation and Use Sheet for Geauga County, Ohio

SAMPLE (PARTIAL) COUNTY INDEX MAP



- Township Boundary
- Township Name
- Village Boundary
- Village Name
- Tract Lot Number
- Street Name
- Acreage
- Deed Book & Page
- Owners Name
- Denotes Continous Ownership

SAMPLE (PARTIAL) MAP PAGE



- Map Page Number
- Village Name
- Village Boundary
- Township Name

SAMPLE (PARTIAL) MUNICIPALITY INDEX MAP



- Street Name
- Village Name
- Township Name

USE OF THE MAP VOLUME

1. LOCATE THE GENERAL AREA OF INTEREST ON THE COUNTY INDEX MAP, ATLAS PAGE 'B', AND NOTE THE MUNICIPALITY NAME (TOWNSHIP OR VILLAGE).
2. REFER TO THE TABLE OF CONTENTS, ATLAS PAGE 'C', AND NOTE THE BEGINNING ATLAS PAGE NUMBER FOR THE MUNICIPALITY OF INTEREST.
3. TURN TO THE PAGE INDICATED. ON THIS PAGE WILL APPEAR AN INDEX MAP FOR THAT MUNICIPALITY.
4. LOCATE THE GENERAL AREA OF INTEREST AND NOTE THE MAP PAGE NUMBER. THIS MAY BE EITHER A LETTER OR A NUMBER.
5. MAP PAGES ARE IN ALPHABETICAL (OR NUMERICAL) SEQUENCE FOLLOWING THE MUNICIPALITY INDEX MAP. FOLLOW SEQUENCE TO THE MAP PAGE INDICATED.
6. LOCATE SPECIFIC PARCEL OF INTEREST AND NOTE THE DESIRED INFORMATION.

NOTE: ON SOME MAPS YOU MAY BE REFERRED TO A DETAIL SHEET SHOWING AN ENLARGEMENT OF THE AREA. THESE MAPS ARE FOUND AT THE END OF THE REGULAR MAP PAGES IN EACH MUNICIPALITY IN EITHER ALPHABETICAL OR NUMERICAL SEQUENCE.

NOTE: CHARDON VILLAGE HAS TITLE SHEETS. TO LOCATE OWNERS NAME, NOTE THE PARCEL NUMBER, REFER TO THE TITLE PAGE FOLLOWING THE MAP OF INTEREST, FOLLOW NUMERICAL SEQUENCE TO THE PARCEL NUMBER OF INTEREST AND NOTE THE DESIRED INFORMATION. IN ALL OTHER MUNICIPALITIES THE OWNERS NAME APPEARS ON THE MAP PAGE.

This book is the property of REAL ESTATE DATA, INC. and is distributed by REDI under a leasing arrangement requiring return to REDI upon termination of the lease. REDI reserves the right to reclaim this book if found in the possession of any firm or person where possession was obtained through any unauthorized source.